



8GB Portable Media Player

User Guide

After Sales Support

Now you have purchased a TEVION® product you can rest assured in the knowledge that as well as your 3 year parts and labour warranty, you have the added peace of mind of dedicated help lines & web support



AFTER SALES SUPPORT

UK/N.IRELAND HELPLINE NO 01270 508538
REP.IRELAND HELPLINE NO 1800 995 036
WEB SUPPORT www.qesh.co.uk
MODEL NUMBER 43183

Contents

01. Welcome Section
02. General Information and Safety Instructions
03. Accessories
04. Features
05. Getting Started
06. Key Functions
07. Instructions
08. Frequently Asked Questions
09. Fault Report Card
10. Warranty Card

Helpline No. UK/Northern Ireland 01270 508538 Rep.Ireland 1800 995 036

Web Support www.qesh.co.uk

Model Number: 43183

Congratulations on choosing to buy a Tevion® product. By doing so you now have the assurance and peace of mind that comes with purchasing a product made by one of Europe's leading manufacturers. All products brought to you by Tevion® are manufactured to the highest standards of performance and safety, and, as part of our philosophy of customer service and satisfaction are backed by our comprehensive 3 year Warranty. We hope you will enjoy your purchase for many years to come.

Please read this manual carefully before use

- To avoid danger of explosion do not throw the product into fire.
- Do not immerse into water or allow to get wet.
- When charging the battery the Power Switch should be in the ON position.
- Charge the battery for 4 hours before first use.
- To extend battery life discharge completely from time to time.
- Recharge the battery if:
 - Battery icon display is low
 - The unit automatically powers off.
 - Menu keys not working

- Do not unplug the player when copying files from your PC.
- Do not connect earphones or audio cable during download.
- Download speed can vary depending on the amount of files you are transferring.
- The order of music files displayed on the Windows Explorer is not the order of actual music playback.
- The player will charge when connected to a PC.
- Do not attempt to open the player in any way as this will void your guarantee.
- Please make sure the version of windows media player is media player 11.0 or above.

THE RECHARGABLE BATTERY INSIDE THIS UNIT CANNOT BE REPLACED

Do not attempt to remove the battery. Once your MP4 player has reached the end of its life span, the unit in its entirety should be taken to a recycling centre. Please contact your local authority for details of recycling schemes in your area.



Earphones (Standard and Sport) x 2

USB Mains Charger x 1

USB Cable x 1

Elastic Armband x 1

Silicone Pouch x 1

Software CD x 1

User Manual x 1

- **1.8" Colour TFT Display**
- **Music Playback MP3, WMA, WAV**
- **Video Playback AMV**
- **Photo Playback JPEG, BMP**
- **FM Radio**
- **Digital Voice Recorder**
- **Ebook Function (TXT File's Only)**
- **High Speed USB 2.0**
- **Built In Rechargeable Battery**
- **Supports Win 98, ME, 2000, XP, Vista Windows 7, Mac OS 10.6 and above**

Player Functions




- 1 – ON/OFF Switch
- 2 – LCD Screen
- 3 – Menu Button
- 4 – Previous or down button
- 5 – Next or up button
- 6 – Play/pause button
- 7 – Volume control button

- **Play/pause/stop:** “Play”, “Pause” and “Stop”.
- **M Button:** Working mode or Menu.
- **Previous/Vol-:** Select previous music, voice or video file, or fast forward/decrease volume.
- **Next/Vol+:** Select next music, voice or video file, or rewind/increase volume.
- **VOL:** To select volume adjust mode.
- **Power Switch:** Power on and power off the player.

Connecting to a PC

Before connecting your Media player to your PC, please make sure that the player is in the ON position to receive any charge.

Using the USB cable attach one end to the MP4 player and one end to your USB port on your PC the player will display a connecting picture, and at the bottom right corner of the PC

a  symbol will appear, this means that your media player is now connected and ready to use. From here simply go into “my computer” and you should see the new device.

ON/OFF Power Supply Operation

Move the power switch to the “ON” position.

Press and hold the round centre button for 3 seconds. The display screen will come on. Repeat the same to turn the unit OFF.

Charging

This player uses a rechargeable lithium battery, it is recommended that you charge the player for at least 5 hours in the power ON position before you attempt to use it in any way.

Connect the USB cable (included) to the player and then to the PC the player should now start to take a charge.





If the player feels as if it is overheating, please power off the player and contact your dealer or the technical support line listed in this manual for support.


AMV Converter

Before placing any movies on the media player make sure that the movies are in AMV format, if they are not then use the AMV converter software provided to change them into the correct format, this software will also give you the option to select the media player as the designated output drive which will automatically place the movie onto your player. In order to do this please follow these steps.

- 1 - Place the disk provided into your PC.
- 2 - Open up the AMV CONVERTOR TOOL AND DRIVE
- 3 - Open media player manager
- 4 - Open up media player Utilities
- 5 - Open AMV convertor and then open AMV Transform

Click the  button to search for the movie you wish to convert into AMV.

Click the  button to select the directory in which you want the converted file to be placed once completed (You can select the media player removable device from here which will then place the file into your player) If you choose an alternative folder to send it to then simply copy and paste the file into your media player using my computer.

Once you have selected the correct file and folder simply press the  button which will then start the conversion.

Please note that if you put the movies on in any other format it will not play. If you already have movies in AMV format then simply copy and paste the movie into the MP4 player.

Once you have the movies in your player, go to the main menu and using the left/right arrows move to the movie option, and press the M button to access this will now display the movies you have put on the player, to begin viewing press the play button.

If you have more than one movie on the player then use the arrows to move to the next movie.

If you want to put a DVD movie onto the player you will first need to convert your DVD into a format that AMV converter will recognize, you can find some freeware if you search on the internet for this.

Video Settings

When the video is on pause you can enter extra settings for the video playback. Simply press the M button to bring up the following options.

- Local Folder (Enter this option to view all available files of this type)

- Delete File (Will delete the current file)
- Delete All (Will delete all files in the selected folder)
- Repeat (Allows you to set the following repeat options – normal, repeat one, folder, repeat folder Repeat all, random, intro)

Placing pictures onto your player

In order to place pictures onto your player you must first make sure that the pictures are in JPEG format. Then simply plug your MP4 into your PC and go into my computer where you will see a removable disk displayed. Now either drag and drop your JPEG pictures onto the removable disk or copy and paste them in.

Photo Viewing

In order to view the pictures you have saved onto the MP4 player from your PC simply enter the photo section of the player and use the arrow buttons to move to your selected picture then press the play button to view the picture.

Photo Settings

Press the M button to bring up the following options.

- Local Folder (Enter this option to view all available files of this type)
- Delete File (Will delete the current file)
- Delete All (Will delete all files in the selected folder)
- Play set (Allows you to set up a timed interval between each photo choose automatic and select how long you want the gaps between each picture to be, then press the play button.

Putting music onto your player

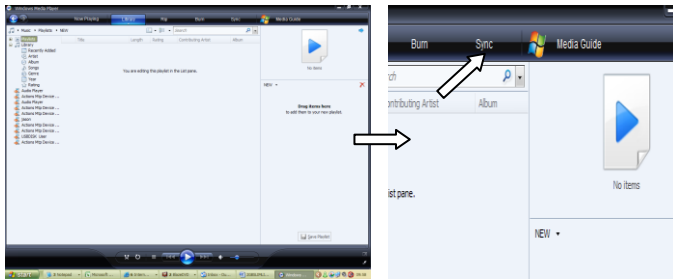
There are two ways you can put music onto your player, the easiest way is drag and dropping or copy and pasting. In order to do this simply plug your player into the PC and then go into MY COMPUTER and you will see a removable disk listed, from here simply copy and paste your MP3's or WMA'S into this removable disk or drag and drop directly into it. This method however will not place your songs into ALBUM'S, if you wish to do this you need to use your Windows Media Player.

SYNCING Music to your player

Syncing a playlist to the player will place your albums as separate folders so you can access one album at a time.

1 – Make sure that you have Windows Media Player 11 or above, if you do not then please download the latest version from the Microsoft website.

2 – Open windows media player and connect your media player to your PC, then click on the SYNC button on the top right of windows.

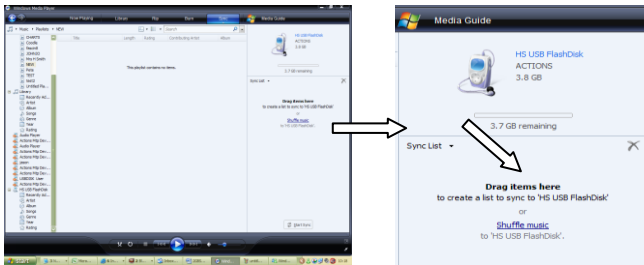


Helpline No. UK/Northern Ireland 01270 508538 Rep.Ireland 1800 995 036

Web Support www.quesh.co.uk

Model Number: 43183

3 – You will notice now on the right hand side of the screen that it's asking you to drag items here to create a list to sync. Before you drag anything over you must first create a playlist containing the albums you require to put on.



Helpline No. UK/Northern Ireland 01270 508538 Rep.Ireland 1800 995 036

Web Support www.quesh.co.uk

Model Number: 43183

4 – To create a playlist left click once on create playlist on the top right of the screen. This can be renamed accordingly.



5 – Now that you have given your playlist a name you can start dragging your albums you have into this playlist.



Helpline No. UK/Northern Ireland 01270 508538 Rep.Ireland 1800 995 036

Web Support www.quesh.co.uk

Model Number: 43183

20

6 – Once you have dragged all your desired albums onto the playlist you should now see your albums in your newly created playlist.

The screenshot shows the Windows Media Player interface. The main window is titled "Windows Media Player" and has tabs for "Now Playing", "Library", "Rip", "Burn", "Sync", and "Media Guide". The "Sync" tab is active. On the left, a tree view shows "Playlists" with a sub-entry "TEST". Below it, the "Library" section lists various music sources. The main area displays a playlist with the following data:

#	Title	Length	Rating	Contributing Artist	Album
5	Yellow	4:30	☆☆☆☆	Coldplay	Yellow
18	In The House In A Heart...	4:17	☆☆☆☆	John Murphy	28 Days...
18	In The House In A Heart...	4:17	☆☆☆☆	John Murphy	28 Days...
2	Apocalypse Please	4:13	☆☆☆☆	Muse	Abolition
2	Apocalypse Please	4:13	☆☆☆☆	Muse	Abolition
3	Time Is Running Out	3:56	☆☆☆☆	Muse	Abolition
3	Time Is Running Out	3:56	☆☆☆☆	Muse	Abolition
3	Time Is Running Out	3:56	☆☆☆☆	Muse	Abolition
4	Sing For Absolution	4:55	☆☆☆☆	Muse	Abolition
4	Sing For Absolution	4:55	☆☆☆☆	Muse	Abolition
4	Sing For Absolution	4:55	☆☆☆☆	Muse	Abolition
5	Stockholm Syndrome	4:59	☆☆☆☆	Muse	Abolition
5	Stockholm Syndrome	4:59	☆☆☆☆	Muse	Abolition
5	Stockholm Syndrome	4:59	☆☆☆☆	Muse	Abolition
6	Falling Away With You	4:41	☆☆☆☆	Muse	Abolition
6	Falling Away With You	4:41	☆☆☆☆	Muse	Abolition
6	Falling Away With You	4:41	☆☆☆☆	Muse	Abolition
8	Hysteria	3:47	☆☆☆☆	Muse	Abolition
8	Hysteria	3:47	☆☆☆☆	Muse	Abolition
8	Hysteria	3:47	☆☆☆☆	Muse	Abolition
9	BlackOut	4:22	☆☆☆☆	Muse	Abolition
9	BlackOut	4:22	☆☆☆☆	Muse	Abolition
9	BlackOut	4:22	☆☆☆☆	Muse	Abolition
10	Butterflies & Hurricanes	5:02	☆☆☆☆	Muse	Abolition
10	Butterflies & Hurricanes	5:02	☆☆☆☆	Muse	Abolition
10	Butterflies & Hurricanes	5:02	☆☆☆☆	Muse	Abolition
11	The Small Print	3:29	☆☆☆☆	Muse	Abolition
11	The Small Print	3:29	☆☆☆☆	Muse	Abolition
11	The Small Print	3:29	☆☆☆☆	Muse	Abolition
12	Endlessly	3:49	☆☆☆☆	Muse	Abolition
12	Endlessly	3:49	☆☆☆☆	Muse	Abolition
12	Endlessly	3:49	☆☆☆☆	Muse	Abolition
13	Thoughts Of A Dying Atheist	3:11	☆☆☆☆	Muse	Abolition
13	Thoughts Of A Dying Atheist	3:11	☆☆☆☆	Muse	Abolition
13	Thoughts Of A Dying Atheist	3:11	☆☆☆☆	Muse	Abolition

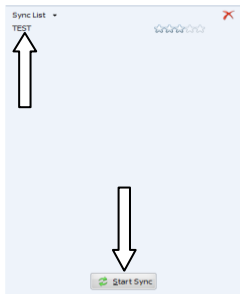
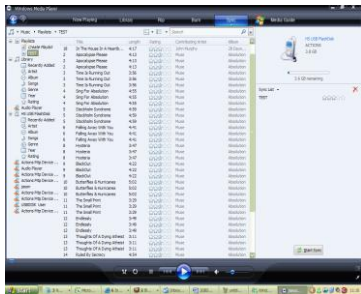
The right-hand pane shows a sync progress for a "3.8 GB" USB FlashDisk. It indicates "3.7 GB remaining" and includes a "Start Sync" button. Below this, there is a section titled "Drag items here to create a list to sync to '3.8 GB USB FlashDisk' or shuffle music to '3.8 GB USB FlashDisk'".

Helpline No. UK/Northern Ireland 01270 508538 Rep.Ireland 1800 995 036

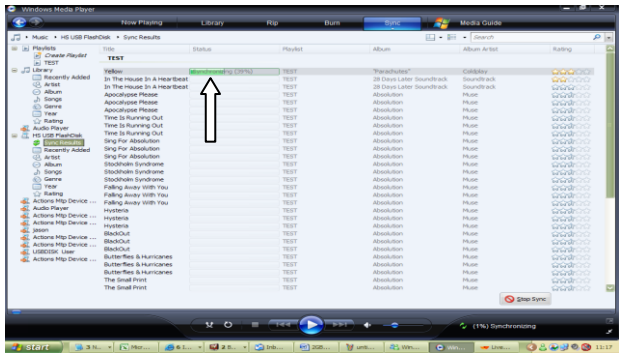
Web Support www.qesh.co.uk

Model Number: 431B3

7 – Now drag your playlist over to the box mentioned in step 3 which asks you to drag items in to sync. What you should now see is your playlist listed in this box, then below you will see a START SYNC button you will need to press to begin syncing the playlist to the player.



8 - Windows media player should now show that it's syncing each song in your playlist by indicating a progress bar for each song. Wait until the sync is complete before you take out your player.



Helpline No. UK/Northern Ireland 01270 508538 Rep.Ireland 1800 995 036

Web Support www.qesh.co.uk

Model Number: 43183

9 – If you get an error message when trying to sync, then please try the following steps and then repeat the syncing process.

1 - Go into My computer and double left click on the device which is your Media player.

2 - Right click on the Removable Storage once.

3 - Left click on format and select continue when prompted.

4 - Your player has now been re-formatted and you can now resync.

10 – You now have successfully synced a playlist to your player. To now access each album simply switch your player on and go into your music function. From here press the M button and you will see a folder which says music. Move to this folder and press the M button again which will now display the albums you have placed on. Move to the album you want to listen to and press the M button to then begin using the songs.

Radio Function

This player also has a built in FM radio function.

NB: The earphones **MUST** be connected to the player in order to pick up radio stations as they act as the antenna.

Select FM Radio from the menu options which will then display the following.



To manually scan through the FM stations continuously press either the left or right arrow buttons. To scan automatically, press and hold either of the left or right buttons. Or press the M button and move to auto scan and press M again.

Once you have found the desired frequency, you can save it for future quick access. To do this press the M button and then again on the save option. You can save up to six stations on the player and to switch between the six saved stations press the play button.

To delete a saved station move to your saved position then press the M button and again on delete.

Recording a station

As well as being able to listen to radio you can also save what you're listening to. Press the M button while your listening to the radio station and scroll down to record. Press the M button to select and you should then see the following screen.



To now record the station press the play button to start recording. To pause recording press the play button again. To stop recording and save the amount recorded so far press and hold the M button for 4 seconds.

In order to playback the recording, you need to exit the radio function and go back to the main menu. Navigate to the voice function and press the M button to enter, where you will find your saved files, press play to listen.

Setup setting

Choose Setup in the main menu.

Press **▶▶ / ◀◀** to select the setting option and then press the M button to confirm.

Pressing and holding the M button will take you back to the main menu.

System time

Press the "PLAY" key, the year is selected, press **▶▶** / **◀◀** key to modify the year. Press PLAY again, then the Month will be selected, press **▶▶** / **◀◀** to modify the month, and then date, hour, minute and seconds follow the same steps. Then press the M button to confirm the setting and exit from the system time menu.

LCD Set

In sys setup you can change the amount of time taken for the player to enter the dark screen mode which changes the amount of time in seconds the screen will switch off. If you do not want this on at all change the dark mode to 0 by pressing the left button.

Language setting

Users can choose the language in this mode. In the interface of language, press **▶▶ / ◀◀** to choose the language and press the **M** key to confirm the selection and exit from the language setting at the same time.

Power off setting

There are two options in this setting Off time and Sleep time.

Off time: means that if there is no operation during the pre-set time, the system will power off automatically. Units are in minutes and you can choose between 0 and 60 mins, if you set it to 0 this setting will not be activated.

Sleep time: means that after working for xxx minutes (xxx=preset time), the system will power off automatically. Units are in minutes and you can choose between 0 and 120 mins, if you set it to 0 this setting will not be activated.

Note: Sleep mode is only valid once it is been set. The system will delete the setting automatically after it works. If you need this function, please reset once more.

Online mode

Users can check the amount of free memory space.

Multi driver: you can see the Normal section and Encrypted section in My Computer.

Normal only: only the Normal section shown in My Computer

Encrypted only: only the Encrypted section shown in My Computer

Note: Some operating systems (pre Windows 2000 SP4) cannot support two drive letters for a USB disk. This means if “Private Space” function is on you should select “single ordinary disk” or “single encrypted disk” in order for correct displaying of the selected disk after it is connected to the PC. Please select “single ordinary disk” if your not sure or turn off the “Private Space”.

Memory info

Users can check the memory information here.

Firmware version

Users can check the firmware of the player here.

Firmware upgrade

Under this mode, users can upgrade the media player if a new software version is released. Contact the manufacturer to check any available.

E-book Mode

This function supports TXT files.

1. Enter the main menu, press **▶▶** / **◀◀** button to choose –“Book”
2. Press the M button to enter this mode.
3. Press **▶▶** / **◀◀** button to select desired text file to read. Press Play button to enter text interface
4. Press **▶▶** / **◀◀** button to turn the pages in sequence
5. While reading, press the M key to enter the Bookmark setting mode.

Play set

1. In the E-book list, press the M key to enter the submenu.
2. Press **▶▶** / **◀◀** button to choose “play set” option:
3. Press the M key to enter this option, or press PLAY key to exit.
4. Press (button to choose “Manual play” or “auto play” options. Press M key to confirm.
5. Press :/9 button to adjust “auto play” speed. Press MENU button to confirm.

Delete File

1. In the E-book list, press the M key to enter submenu.
2. Press **▶▶** / **◀◀** to choose "Delete file" option:
3. Press M key to enter this option.
4. Press **▶▶** / **◀◀** to choose the file you want to delete and press the M key to confirm.
5. Press **▶▶** / **◀◀** to choose Yes or No, and press the M key to confirm.

Delete All

1. In the E-book list, press the M key to enter submenu.
2. Press **▶▶** / **◀◀** to choose "Delete all" option:
3. Press the M key to enter this option.
4. Press **▶▶** / **◀◀** to choose Yes or No, if yes is selected all the E-book files will be deleted.

Game Mode

Press the M key to enter the Game mode, and then press **▶▶** / **◀◀** to select the game and press the M key to confirm.

1. When I press “play”, No display ?

Cause/ Solution : Ensure the battery is charged.

2. When I want to play files, there is no sound ?

Cause/ Solution : Ensure the volume is turned up. Check the earphones are connected properly.

3. Why does my computer display an error when I disconnect the player?

Cause/ Solution : When transferring files from your PC to the media player DO NOT disconnect before transfer has completed.

4. Why can't I download files while the MP4 player is connected to the PC ?

Cause/ Solution : If using win98 or below it may well be the USB Driver hasn't been installed correctly, Please install the USB driver again and follow the operation instruction, or your computer's motherboard may not support the USB equipment, you may need to update your motherboard driver.

5. Why can't I see the files which have been stored in the player?

The file type may be wrong, check that for songs the type is either MP3, WAV or WMA. For videos it must be in AMV and for photos it must be in JPEG.

6. Why does it display that "the disk is full" in the computer but we do not see any files in the disk after connecting the PC?

Cause/Solution: In the setting mode, you set the Online device mode as Media device now but the online device mode was USB mode when you downloading the files or you set the Online device as USB device but the online device mode was Media device when downloading the files. Please set the online device into the proper mode.



8GB PORTABLE MEDIA PLAYER

FAULT REPORT CARD

Name _____

Address _____

Email _____

Contact Tel No. _____

Model Number 43183

Fault Description _____

SERVICE HELPLINE

UK/N.Ireland 01270 508538

Rep.Ireland 1800 995 036

web: www.quesh.co.uk

Qesh Ltd
1 Solway Court,
Crewe Business Park, CW1 6LD



8GB PORTABLE MEDIA PLAYER

WARRANTY CARD

Congratulations! You have made an excellent choice with the purchase of this quality product. Our commitment to quality also includes our service. Should you, contrary to expectations, experience defects due to manufacturing faults during private use within 36 months of the date of purchase we shall be liable for warranty in accordance with statutory warranty regulations provided that:

- the device was not put to any use other than the intended
- was not overloaded
- was not used with the wrong accessories
- repairs were not carried out by any other than the authorized workshop

The warranty certificate is only valid in connection with the receipt. Please keep both in a safe place. This warranty does not affect your statutory rights.

This purchase is guaranteed for a period of three years beginning on the day of purchase. Keep your purchase receipt safe as proof of date of purchase. The guarantee can only be extended for the duration of any repair required.

Should your item become defective during the warranty period, in the first instance please call our service centre on the number below, they will then inform you of what to do next. We will at our discretion, either repair or exchange the device in accordance with warranty legislation.

Please enclose the following when sending your product in for repair:

1. Receipt (proof of purchase)
2. This warranty certificate with the fault report form overleaf complete with your name, contact details and fault description.

If the original receipt is not enclosed the repair will be charged in all cases. After the warranty has expired you can still send defective devices for repairs to the address stated below. Quotes as well as repairs after the warranty period are to be paid for in all cases.

Ensure that the product is sent well packed as no responsibility can be accepted for items lost or damaged in transit.

This warranty does not affect your statutory rights.



