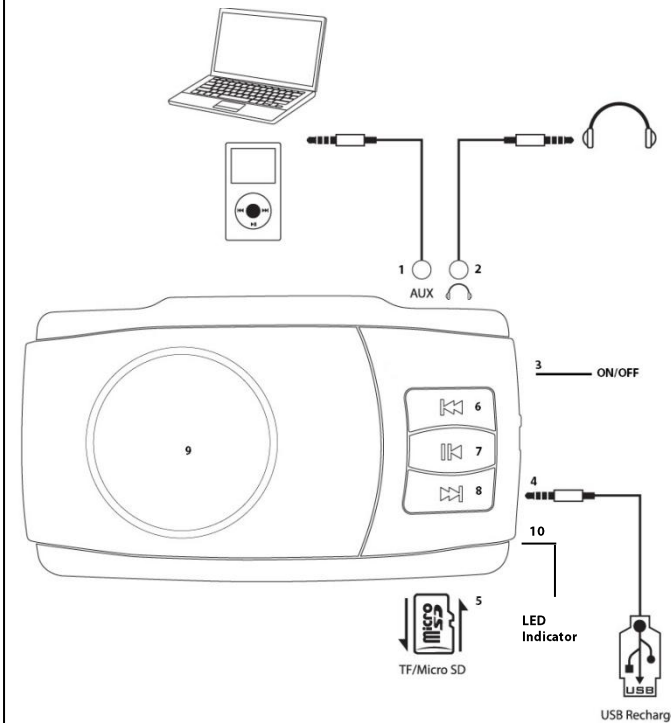


### SPORTS TRAVEL SPEAKER

#### TRAVEL SPEAKER FUNCTIONS



- 1 – Aux In
- 2 – Headphones
- 3 – ON/OFF/MODE switch
- 4 – Mini USB
- 5 – Micro SD Socket
- 6 – Skip Back / Volume Down Or Previous Radio Station (FM Mode)
- 7 – Play / Pause Or Auto Search and Save (FM Mode)
- 8 – Skip Forward / Volume Up Or Next Radio Station (FM Mode)
- 9 – Speaker
- 10 – LED Indicator – Flashes When Playing, Solid Paused

The Sports Travel Speaker can be connected to PC, mobile phones and MP3 players. The mode will automatically switch to AUX when inserting an AUX device into the AUX socket using the cable provided.

#### BATTERY SAFETY

##### DO NOT ATTEMPT TO REPLACE THE BATTERY INSIDE THIS UNIT

The Li-ion battery inside this unit cannot be replaced.

Electric and electronic equipment (EEE) contains materials, parts and substances which can be dangerous to the environment and harmful to human health. Once this appliance has reached the end of its life span, the unit in its entirety should be taken to a recycling centre. Please contact your local authority for details of recycling schemes in your area.



Do not dispose of this product in your household waste. Please contact your local authority for details of recycling schemes in your area.



Do not dispose of batteries in your household waste. Please contact your local authority for details on safe disposal.

#### GENERAL INFORMATION & SAFETY INSTRUCTIONS

- 1 – Never attempt to repair this unit yourself. Opening the unit will invalidate the warranty.
- 2 – Keep away from fire.
- 3 – Do not expose this product to water, rain or dampness.
- 4 – Avoid exposure to direct sunlight and other heat sources.
- 5 – Keep away from strong magnets.
- 6 – Ensure this product is disconnected from mains power before cleaning.
- 7 – Charge the battery for ten hours before first use.
- 8 – Recharge the battery if the unit suddenly powers off.
- 9 – Always switch off the unit when not in use to preserve the battery life.
- 10 – Discharge completely from time to time to prolong the battery life.

### SPORTS TRAVEL SPEAKER

#### USING YOUR TRAVEL SPEAKER

##### MP3 Mode

- Switch on the Sports Travel Speaker and move the mode key to the MP3 position.
- Insert your Micro SD Card and once the Sports Travel Speaker has finished reading your Micro SD Card it will start to play.
- Use the Skip Forward/Back keys to navigate through your songs.
- Use the Play/Pause key to play or pause the music
- Press and hold the Skip Back key to turn down the volume or press and hold the Skip Forward key to increase the volume.

**Please Note: You may need to use a pen nib or similar to insert the TF Card fully.**

##### FM Radio Mode

- Switch on the Sports Travel Speaker and move the mode key into the FM Mode position.
- Press and hold the Play / Pause to automatically search and store stations.
- Use the Skip Forward/Back keys to navigate through the saved stations.
- Press and hold the Skip Back key to turn down the volume or press and hold the Skip Forward key to increase the volume.

**Please Note: You can not manually search for radio stations.**

##### External Device Mode

You can connect external devices using the AUX cable provided. Simply plug the device into the AUX in socket the mode will automatically change.

**Please Note: When using an auxiliary device you can only change the volume and tracks using the aux device and not the Sports Travel Speaker.**

##### Earphones

When earphones are connected to the Sports Travel Speaker the sound will automatically start to come through the earphones.

##### Recharging & Power Supply

The built in Li-ion battery is recharged using the mini USB cable (provided) connected to a PC/Laptop. The first charge requires 10 hours then 3 hours thereafter. You can charge the Sports Travel Speaker while it is in use. (But not for the first charge).

#### TECHNICAL SPECIFICATIONS AND FREQUENTLY ASKED QUESTIONS

##### Technical Specification

Frequency range: 250Hz – 20KHz  
Input Voltage: 5V  
Impedence: 4 ohm  
Rated Power: 2 x 2.5W

##### Frequently Asked Questions

- 1 – Why won't the speaker come on?  
Please ensure the battery is charged or the Travel Speaker is connected to the mains.
- 2 – Why won't music play back when using the Micro SD Card slot?  
Please ensure that the music is in MP3 format.
- 3 – Why don't the controls on the speaker work when using AUX device?  
The AUX device controls the sound and playback when using AUX mode.
- 4 – Why does my speaker suddenly power off?  
Please ensure that the battery is charged or the speaker is connected to the mains power supply.