

# TEVION®

## User Guide

### PORTABLE TWIN SCREEN DVD PLAYER



Now you have purchased a Tevion® product you can rest assured in the knowledge that as well as your 3 year parts and labour warranty you have the added peace of mind of dedicated helplines and web support

#### AFTER SALES SUPPORT



GB 01270 508538 IR 1800 995 036

[www.qesh.co.uk](http://www.qesh.co.uk)

MODEL NUMBER: 46607

7" TWIN SCREEN PORTABLE DVD PLAYER  
MAINS + AV + CAR CABLES  
POWER+AV TRANSFER CABLES  
ALL IN ONE CARRY CASE  
REMOTE CONTROL  
2 X SPEAKERS  
2 X HEADREST BRACKETS

**3**  
YEARS  
WARRANTY

## Chapter

- 02. Welcome Section
- 03. General Information and Safety Instructions
- 04. Battery Handling and Usage
- 05. Accessories
- 06. Features
- 07. Charging and Connecting
- 08. Remote Control & DVD Functions
- 09. Getting Started
- 10. System Setup
- 11. Smart Mount Headrest Bracket
- 12. Specifications
- 13. Troubleshooting
- 14. Warranty Card
- 15. Fault Report Card

Congratulations!

You have made an excellent choice with the purchase of this quality Tevion® brand product. By doing so you now have the assurance and peace of mind which comes from purchasing a product that has been manufactured to the highest standards of performance and safety, supported by the high quality standards of Aldi.

We want you to be completely satisfied with your purchase so this Tevion® product is backed by a comprehensive manufacturer's 3 year warranty and an outstanding after sales service through our dedicated Helpline. We hope you will enjoy using your purchase for many years to come.

If you require technical support or in the unlikely event that your purchase is faulty please telephone our Helpline for immediate assistance. Faulty product claims made within the 3 year warranty period will be repaired or replaced free of charge provided that you have satisfactory proof of purchase (keep your till receipt safe!).

This does not affect your statutory rights. However, be aware that the warranty will become null and void if the product is found to have been deliberately damaged, misused or disassembled.

Please read through the following safety information before use



The lightning flash and arrowhead within the triangle is a warning sign alerting you of dangerous voltage inside the product



The exclamation mark within the triangle is a warning sign alerting you of important safety instructions concerning the product

## CAUTION

**RISK OF ELECTRIC SHOCK  
DO NOT OPEN**

- To avoid risk of electric shock do not attempt to open this appliance.
- Keep away from fire.
- Do not expose the appliance to water, rain or dampness.
- Keep this appliance away from direct sunlight and other heat sources.
- Keep this appliance away from strong magnets.
- Never cover the ventilation slots on the underside or back of the appliance.
- Avoid placing heavy objects on top of the appliance.
- Always disconnect the appliance from mains power before cleaning.
- Clean the exterior of the appliance with a soft cloth only.

## Twin Screen Portable DVD Player

**DO NOT ATTEMPT TO REPLACE THE BATTERY INSIDE THIS UNIT**

The Lithium-polymer battery inside this appliance cannot be replaced.

### Remote Control

The remote control uses 2 x AAA batteries.

When inserting batteries always ensure the correct +/- polarity.

### Battery Safety

Never throw batteries into fire or expose to excessive heat sources.  
If batteries are swallowed, please seek immediate medical attention  
Ensure correct polarity when installing batteries

Do not recharge non-rechargeable batteries  
Never mix old and new batteries or battery types

### Disposal of Your Old Product

Electric and electronic equipment (EEE) contains materials, parts and substances which can be dangerous to the environment and harmful to human health. Once this appliance has reached the end of its life span, the unit in its entirety should be taken to a recycling centre. Please contact your local authority for details of recycling schemes in your area.



Do not dispose of batteries in your household waste. Please contact your local authority for details on safe disposal.



Do not dispose of this product in your household waste. Please contact your local authority for details of recycling schemes in your area.

# Accessories

5

The following accessories are included with your portable DVD player.



1 x Remote control



1 x Mains power adaptor



1 x Set AV cables



2 x Earphones



1 x AUX cable



1 x Car adaptor



1 x All in one carry case



1 x Power cable



2 x Headrest bracket  
with velcro straps

- High resolution dual widescreen 7" LCD TFT display
- Playback formats DVD, VCD, DIVX, CD, CD-RW, MP3, MPEG4, JPEG
- Playback control PLAY, PAUSE, FAST FORWARD, FAST REWIND
- USB Input
- SD/MMC card reader
- Integrated stereo speakers
- Built in rechargeable battery
- Infra-red remote control
- Mains power or battery operated
- Volume control
- AV output
- Earphone jack
- Coaxial socket
- Hold function

The player uses a built in lithium-polymer rechargeable battery. It features a high ratio of energy to weight and has no memory. Therefore it can be recharged at any time regardless whether it is fully or partially discharged.

The time required to fully charge the battery is 6 hours. After a full charge the battery can be used for up to 2 hours.

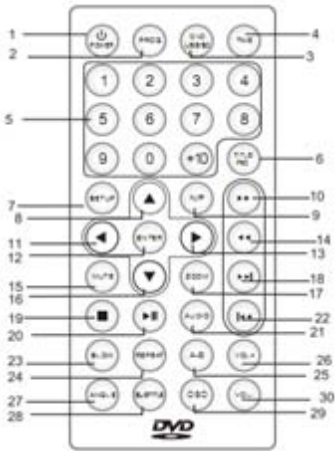
Set the 'Charge / Power' switch on the side of the player to 'Charge'. Connect the enclosed mains power adaptor to the DC input jack on the unit, then plug the adaptor into a 240V AC wall socket. The indicator on the front of the player will light red to indicate charging and will turn green when the battery is fully charged.

To prolong the life of the battery, always disconnect the player from the mains power supply when not in use.

### **Caution**

Keep away from heat sources when the unit is being charged as the unit will become hot during charging.

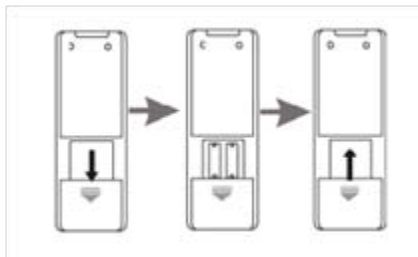
**NEVER LEAVE CHILDREN UNATTENDED WITH ELECTRICAL EQUIPMENT**



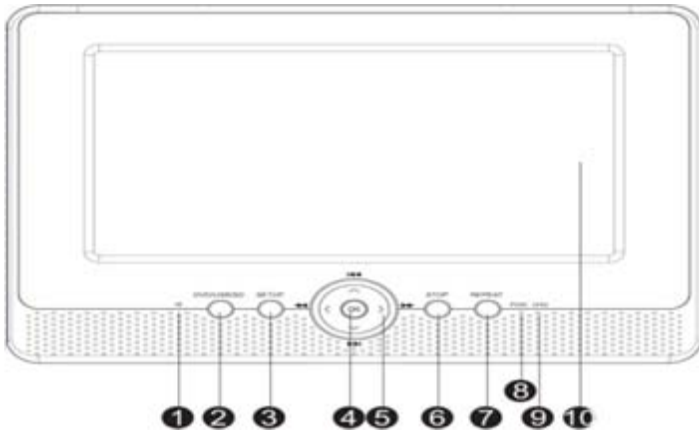
- |                 |                 |
|-----------------|-----------------|
| 1 Power         | 16 Down arrow   |
| 2 Program       | 17 Zoom         |
| 3 DVD/USB/SD    | 18 Next         |
| 4 Time          | 19 Stop         |
| 5 Numeric keys  | 20 Play / pause |
| 6 Title / PBC   | 21 Audio        |
| 7 Setup         | 22 Previous     |
| 8 Up arrow      | 23 Slow         |
| 9 N/P           | 24 Repeat       |
| 10 Fast forward | 25 A-B repeat   |
| 11 Left arrow   | 26 Volume +     |
| 12 Enter        | 27 Angle        |
| 13 Right arrow  | 28 Subtitle     |
| 14 Fast rewind  | 29 OSD          |
| 15 Mute         | 30 Volume -     |

The remote control requires 2 x AAA batteries (supplied). Slide off the back cover and insert batteries ensuring the correct +/- polarity. Slide the cover back on until it clicks into place. Always ensure to point the remote control directly at the infra-red sensor on the front of the DVD player.

## Battery Installation

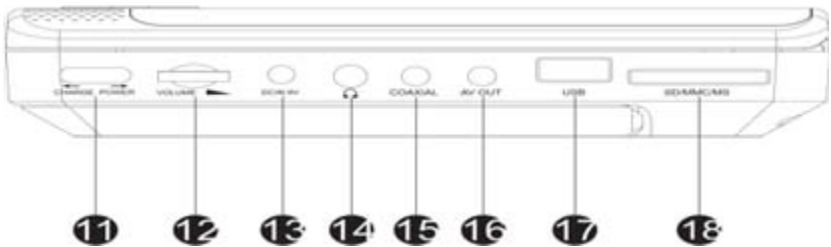


# DVD Player Functions



- 1 Infra-red
- 2 DVD/USB/SD
- 3 Setup
- 4 OK
- 5 Direction Keys

- 6 Stop
- 7 Repeat
- 8 Power
- 9 Charge
- 10 LCD Display



- 11 Charge / Power ON
- 12 Volume Control
- 13 DC In Jack
- 14 Earphone Jack

- 15 Coaxial
- 16 AV Out jack
- 17 USB Port
- 18 SD/MMC Port

## Key Functions

The functions of each key are detailed below. The main function keys appear on both the remote control (RC) and the DVD player. Other less used keys however appear only on either RC or DVD.

POWER	• Turns the player ON/OFF.
PROG	• Programs title and chapter. Use number keys to make selection, then use directional keys to move to 'Start', press 'Enter' to begin program. Press 'PROG' again to cancel and return to normal viewing.
DVD/USB/SD	• Switches between Modes.
TIME	• Displays elapsed time, remaining time, chapter etc.
123456...	• Used for direct input.
TITLE/PBC	• Returns to the main title menu. PBC is for use only for discs encoded with Play Back Control function.
MODE(RC)	• Switches between DVD/USB/SD mode.
MODE(DVD)	• Displays and allows user to change panel quality.
SETUP	• Allows adjust of General, Audio, Video, Preference & Password setup.
ARROW KEYS	• Used to navigate through menu options.
N/P	• Switches between NTSC, PAL and MULTI settings.
ENTER	• Used to confirm a selection.
MUTE	• Switches sound OFF and ON.
ZOOM	• Press repeatedly to zoom the picture x2, x3, x4, ½, ⅓, ¼. While in zoom mode, use the arrow keys to move around the picture.
AUDIO	• Press repeatedly to select available audio languages on the DVD.
SLOW	• Allows slow forward or reverse playback. Audio is muted in this mode.
REPEAT	• Press to switch repeat modes, chapter, title, all.
A-B	• User can continuously repeat a scene. Press once to mark a starting point, press again to make ending point. Press a third time to cancel. Used to change the viewing angle. (DVD must be compatible).
ANGLE	• Increases and decreases the volume.
VOL+ / VOL-	• Press repeatedly to turn ON/OFF subtitles. (DVD must be compatible).
SUBTITLE	• Press repeatedly to display the relevant disc information.
OSD	• Returns to the main menu of the DVD.
MENU	



Play / pause



Stop



Forward / skip



Fast forward



Backward / skip



Fast rewind

The default on screen display language on the DVD player is set to English. Should you wish to change this, please enter the general setup page and select 'Osd Lang'.

## Basic DVD Operation

1. Before use, open the disc cover and carefully remove and discard the white card tab from inside the deck.
2. Remove all transparent protection film from the player.
3. Ensure the 'Charge / Power' switch on the right-hand side of the player is set to 'Charge'.
4. Connect the mains power adaptor to the DC-in socket and charge fully for 6 hours.
5. Once the player is fully charged slide the 'Charge / Power' switch to 'Power', open the disc cover and carefully insert a DVD (label side facing up) until it clicks into place. Close the disc cover, the DVD will load automatically.
6. Your DVD menu screen will appear. Use the directional arrow keys and enter button for your required selection.

## USB / SD Operation



1. The USB input and SD/MMC card slot can be used for movie, music and photo playback.
2. Insert either a USB device or SD/MMC card into the relevant slot at the side of the player.
3. If media is inserted in both the USB port and the SD/MMC card slot then you can select which input source you require by pressing the MODE button on the remote control or the DVD/USB/SD button on the DVD player. Use the directional arrow keys to highlight your selection and press OK to confirm.

# Getting Started

## MP3 / MPEG4 Playback

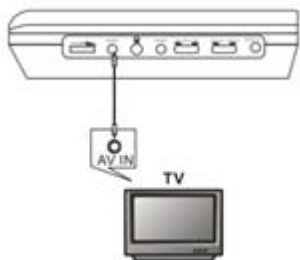
After the unit loads an MP3/MPEG4 disc, USB device or SD/MMC memory card, a menu showing the contents will be displayed on screen. Use the UP and DOWN directional arrow keys to highlight your selection and press ENTER to confirm. The RIGHT arrow key can be used to enter sub-folders. Pressing the left arrow will guide you back to the main root menu. Press STOP to go directly back to the main menu and MODE on RC or USB/SD on DVD to switch between DVD, USB or SD/MMC again.

## JPEG Photo Playback

When a CD, USB device or SD/MMC memory card containing photographs is loaded, the player after a few seconds will automatically begin a photo slideshow. Simply press STOP to end the slideshow and STOP again to display the root folder. Various playback options are available by pressing REPEAT. Press  to pause playback and  again to resume playback. Press MODE on RC or USB/SD button on DVD to switch between DVD, USB or SD/MMC again.

## Connecting to a TV

You can connect this portable DVD player to a TV so that your movies, music or photos can be watched and listened to on a larger screen.



Use the AV cable provided to connect to the AV-output socket of the DVD player and the AV-input of your TV. Select the relevant AV input source from your TV remote to display the DVD.

# Getting Started

## Connecting to the twin screen

1. Take the power cable and insert one end into the DC OUT socket on the secondary screen, place the other end into the DC IN socket on the master screen.
2. Then take the AUX cable and place one end into the AV IN socket on the secondary screen, then place the other end into the AV OUT socket on the master screen.
3. Insert the power source into the DC IN socket on the secondary screen.

**Please ensure that the AUX cable is fitted securely in both units as this may reduce the quality of playback on the secondary screen.**

Press SETUP on the remote control or DVD player to enter SETUP menu. Here you will find the following options: -

## General Setup Page

- |             |   |
|-------------|---|
| TV Display  | This option is for use when connected to a conventional television set.   |
| Angle Mark  | This function is for use viewing different camera angles of encoded discs.  |
| OSD Lang    | On screen display. Allows user to change the language setting.  |
| Captions    | Displays captions on compatible encoded discs.  |
| Screensaver | If set to ON, the screensaver will appear on screen after a few minutes. Press any button to cancel.                          |
| Last Memory | Set this to ON to remember the last position of a disc. Next time the unit is turned on, it will play from the last position. |

## Audio Setup Page

- |                         |   |
|-------------------------|---|
| Speaker Setup           | This function applies only to Dolby AC-3 encoded 5.1 channel discs. LT/RT – The 5.1 channel audio is mixed into left channel and right channel and is output via the FL and FR speakers respectively. STEREO – The 5.1 channel audio is mixed into stereo signal and is output via the FL and FR speaker. |
| Spdif Setup             | OFF – There will be no digital audio signal output. RAW – The digital audio signal output will be in its raw format. Used only for DTS & Dolby 5.1 signals. PCM – The digital audio signal output will be in PCM format. Used normally for CD audio signals.  |
| Dolby Digital Equaliser | Select between Stereo, L-mono, R-mono & Mix mono. Select between various EQ modes for different sound experience.   |
| 3D Processing           | Choose between various environment sound settings .   |

# System Setup

## Video Setup Page

Quality Allows adjustment of Sharpness, Brightness, Contrast,  
Panel Quality Gamma, Hue, Saturation & Luma delay to suit your personal preference.

## Preference Page

TV Type Select between NTSC, PAL or MULTI  
PBC Activates the Play Back Control function for use only with encoded discs.  
Audio/Subtitle Allows selection of preferred language, subtitle and disc menu.  
Disc  
Parental A safety feature which allows parents to set maximum ratings of movies which can be viewed. The default password is 1389. This function only works with parental function supported discs.  
Default Restores the default settings with the exception of the settings in the PASSWORD and PARENTAL setups.

## Password Setup Page

Password Mode / Change This setting allows you to turn ON/OFF password and change new password. The default is 1389.  
Note. The default password (1389) is always active even if the password has been reset.

The Headrest Bracket has been designed for ease of use and security. It is light in weight and portable. The DVD player can easily be detached for safe storage.

1. Feed the velcro straps through the slots in the headrest bracket.



2. Attach the headrest bracket to the DVD player using the screw provided.



3. Loop both straps over the headrest and velcro fasten securely.



**Should you experience any difficulties fitting the Headrest Bracket, please call our customer support team on the telephone number below.**

Compatible disc formats	DVD,VCD,CD,CD-RW,MP3,MPEG4,DIVX, JPEG
Signal System	PAL / NTSC / MULTI
Panel Size	7 Inches
Frequency Response	20Hz to 20KHz
Video Output	1 Vp-p75 Ohm unbalanced
Audio Output	1.4 Vrms/10 kOhm
Dynamic Range	Greater than 85dB
Laser	Semiconductor laser, Waver length: 650nm/795nm
Power source	DC 9-12V
Power consumption	10W
Operating temperature	5-40° c
Battery Type	Lithium-polymer

## Region Coding

In compliance with DVD patent requirements. The region code for this DVD player is 2.



## Symptom

No Power

No Picture

No Sound

Disc not loading

Remote Control not working

USB not loading

Cannot advance through start of movie

No Key Operation by main unit

## Remedy

Ensure the AC adaptor is securely fitted into the mains power supply.

If using from the battery ensure battery is fully charged.

Press the TFT/OFF button

Check audio settings in general setup page.

Ensure the disc has been correctly loaded, is clean without scratches and ensure the format is compatible.

Check the batteries are not exhausted.

Check the correct +/- polarity. Ensure the RC is pointed at the front of the DVD.

Ensure you are in USB mode. Check USB device is securely fitted and is not more than 8GB capacity. Check files are compatible with player.

The disc programming prohibits this action

Ensure the HOLD switch is set to OFF.

**If your problem is not listed, please call our customer support team on the number below**

# TEVION®

## PORTABLE TWIN SCREEN DVD PLAYER

---

### WARRANTY CARD

**Congratulations!** You have made an excellent choice with the purchase of this quality product. Our commitment to quality also includes our service. Should you, contrary to expectations, experience defects due to manufacturing faults during private use within 36 months of the date of purchase we shall be liable for warranty in accordance with statutory warranty regulations provided that: -

- the device was not put to any use other than the intended
- was not overloaded
- was not used with the wrong accessories
- repairs were not carried out by any other than the authorised workshop

The warranty certificate is only valid in connection with the receipt. Please keep both in a safe place. This does not affect your statutory rights.

The purchase is guaranteed for a period of three years beginning on the day of purchase. Keep your purchase receipt safe as proof of date of purchase. The guarantee can only be extended for the duration of any repair required.

Should your item become defective during the warranty period, in the first instance, please call our customer service centre, they will then inform you of what to do next. We will at our discretion, either repair or exchange the device in accordance with warranty legislation.

Please enclose the following when sending your product in for repair: -

- 1.Receipt (proof of purchase)
- 2.This warranty certificate and fault report card complete with your contact details and fault description.

If the original receipt is not enclosed the repair will be charged in all cases. After the warranty has expired you can still send defective devices for repairs to the address stated below. Quotes as well as repairs after the warranty period are to be paid in all cases.

Ensure that the product is well packed as no responsibility can be accepted for items lost or damaged in transit. This warranty does not affect your statutory rights.



# TEVION®

## PORTABLE TWIN SCREEN DVD PLAYER

---

### FAULT REPORT CARD

---

Name \_\_\_\_\_

Address

\_\_\_\_\_

\_\_\_\_\_

Email \_\_\_\_\_

Contact Tel No.

\_\_\_\_\_

**Model Number 46607**

Fault Description

\_\_\_\_\_

\_\_\_\_\_

\_\_\_\_\_

### **SERVICE HELPLINE**

UK/N.Ireland 01270 508538

Rep.Ireland 1800 995 036

web: [www.qesh.co.uk](http://www.qesh.co.uk)

Qesh Ltd

1 Solway Court, Crewe Business Park, CW1 6LD