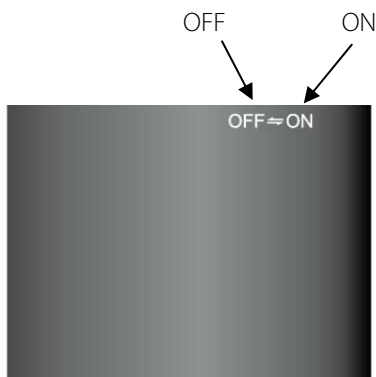
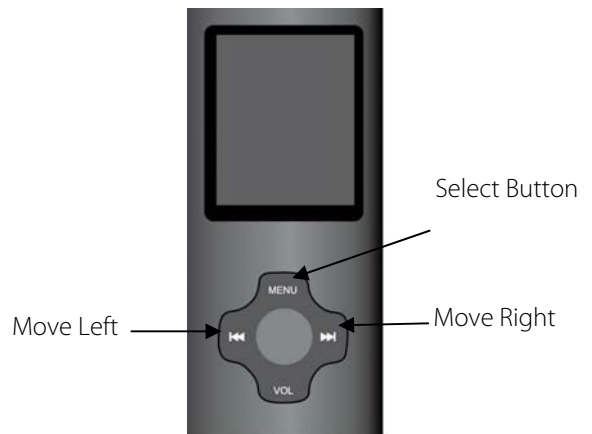


#### SWITCHING ON YOUR VIDEO PLAYER

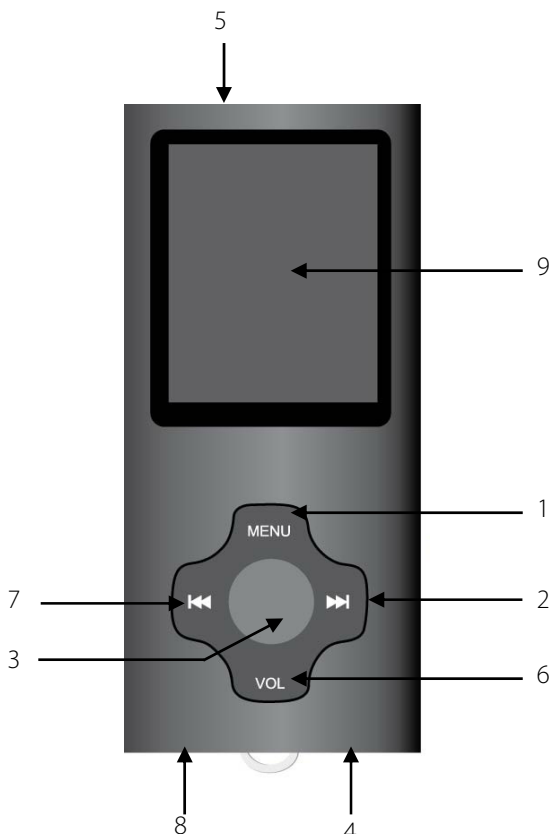
On the top of the video player there is small ON/OFF switch. Slide to the ON position. Please note that you must charge the media player for at least 4 hours with the switch in the ON position before first use.



Once you have put your music/videos onto your video player simply select the desired mode by pressing the left & right arrow buttons to move to the selected option and then press the MENU to select.



#### FUNCTIONS



- 1 – Mode selection / Menu button
- 2 – Next song / Volume increase button
- 3 – Play / Pause / Stop
- 4 – Earphone Jack
- 5 – ON/OFF Switch
- 6 – Volume Select (use to switch volume control on)
- 7 – Previous song and Volume decrease button
- 8 – USB Port
- 9 – Display Screen

#### USB Connection

If your PC does not recognise the player, make sure that the USB connection is firmly in at both ends, and if you run windows 98, please Install the necessary drivers from the software CD provided (not needed for win-XP). You should also try some of your PC's other USB ports as these can become damaged as well as the wire connector

## TRANSFERRING MUSIC TO YOUR VIDEO PLAYER

### USB Music Transfer

The easiest way to put music onto your video player is by 'dragging and dropping'.

**Note: Please ensure the 'Online Device' option on your video player is set to USB mode.**

Plug the video player into your PC, then go into 'MY COMPUTER'. You should see a removable disk appear.

Locate the MP3's and WMA's already stored on your PC then simply 'drag and drop' or 'copy and paste' them directly into the removable disk (video player).

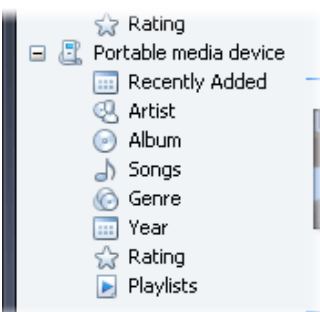
### Media transfer using windows media player

Another way to put MP3's onto your player is to use windows media player to sync your playlists. Plug your player into your PC and open 'windows media player'. When you connect a device for the first time, windows media player selects the sync method (automatic or manual) that works best for your device depending on storage capacity and the size of your library. If the storage capacity of your device is more than 4GB (gigabytes) and your entire library can fit into the device, windows media player automatically syncs your entire library to your device. Then, in future, every time you connect the device to your computer, windows media player updates the device to mirror your library.

If the Player has selected to sync your device automatically, when you click Finish the Player will sync your entire library to your device. After that, your device will sync every time you connect it to your computer.

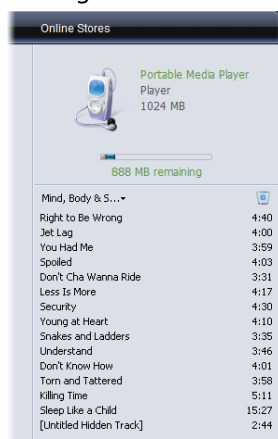
If the Player has selected to sync your device manually, when you click Finish Windows Media Player will open to the Sync tab where you can select the files and playlists you want to sync manually.

The Player adds the device to the Navigation pane with all of the default categories found in the library, as shown in the following screen shot.

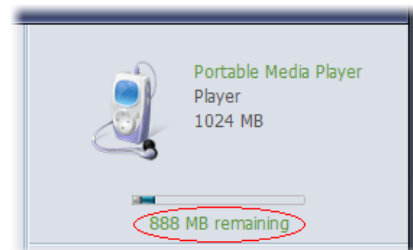


#### To select items to sync manually

On the Sync tab, drag items such as files, albums, and playlists to the List pane to add them to the list of items to sync, as shown in the following screen shot.



To select multiple adjacent items, press and hold the SHIFT key while selecting. To select nonadjacent items, press and hold the CTRL key while selecting. In the List pane, verify that the items you have selected to sync will all fit on the device, as shown in the following screen shot. If necessary, remove items from the list. Synchronization will start when you click the Start Sync, as shown in the following screen shot.



**Note: Please ensure the 'Online Device' option on your media player is set to 'Media Device Mode'**

If you are still unsure on how to do this, please watch the video tutorial on our website [www.qesh.co.uk](http://www.qesh.co.uk)

For full instructions, please refer to the user manual