

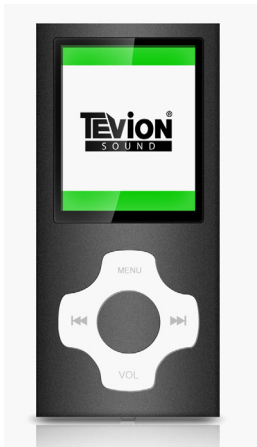


8GB PORTABLE VIDEO PLAYER

User's Guide

After Sales Support

Now you have purchased a TEVION® product you can rest assured in the knowledge that as well as your 3 year parts and labour warranty, you have the added peace of mind of dedicated help lines & web support



AFTER SALES SUPPORT

UK/N.IRELAND HELPLINE NO **0844 635 0008**

REP.IRELAND HELPLINE NO **1800 995 036**

WEB SUPPORT www.qesh.co.uk

MODEL NUMBER: **42263**

Welcome!

Congratulations on choosing to buy a Tevion® product. By doing so you now have the assurance and peace of mind that comes with purchasing a product made by one of Europe's leading manufacturers. All products brought to you by Tevion® are manufactured to the highest standards of performance and safety, and, as part of our philosophy of customer service and satisfaction are backed by our comprehensive 3 year Warranty. We hope you will enjoy your purchase for many years to come.

General Information and Safety Instructions

Please read this manual carefully before use

- To avoid danger of explosion, do not throw the product into fire.
- Do not immerse into water or allow to become wet.
- When charging the battery the power switch should be set to **ON**.
- Charge the battery for 4 hours before first use.
- To prolong the battery life discharge completely from time to time.
- Recharge the battery if: -
 - Battery display icon shows low.
 - The player auto switches off.
 - Menu keys are not working.
- Do not unplug the USB cable during file download, it may cause your PC or Media player to malfunction.
- Do not connect earphones or audio cable during file

download.

- Avoid opening too many folders at the same time as this will reduce download speed.
- The order of music files displayed in Windows Explorer is not necessarily the order of music playback.
- The player will start charging when connected to a PC.
- Do not attempt to open the player in any way as this will invalidate the warranty.
- Please ensure the version of the Direct X on your computer is Direct X 8.0 or above when converting the format of the video file. To update DirectX, please visit www.microsoft.com and read the concerned information carefully.

THE RECHARGEABLE BATTERY INSIDE THIS UNIT CANNOT BE REPLACED



Do not attempt to remove the battery. Once your MP4 player has reached the end of its life span, the unit in its entirety should be taken to a recycling centre.

Please contact your local authority for details of recycling schemes in your area.

Accessories

Earphones x 2

USB Mains charger x 1

Elastic Armband x 1

Silicone Pouch x 1

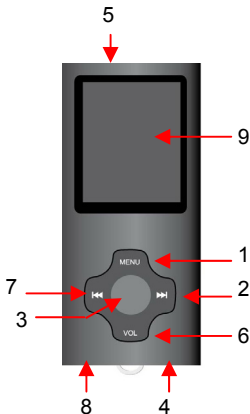
USB Cable x 1

Software CD x 1

User Manual x 1

Getting Started

Player Functions



- 1 – Mode selection / Menu button
- 2 – Next song and Volume increase button
- 3 – Play / pause / stop
- 4 - Earphone Jack
- 5 – ON/OFF Switch
- 6 – Volume Select (use to switch volume control on)
- 7 – Previous song and Volume decrease button
- 8 – USB Port
- 9 – Display Screen

Keys

- **Play/pause/stop:** “Play”, “Pause” and “Stop”.
- **Menu Button:** Working mode or Navigation button.
- **Previous/Vol-:** Select previous music, voice or video file, or fast forward/decrease volume.
- **Next/Vol+:** Select next music, voice or video file, or rewind/increase volume.
- **VOL:** Press to select volume adjustment mode.
- **Power Switch:** Power on and power off the player.


Features

- Supports MP3, WMA, WAV format music
- Supports AMV video format.
- FM radio
- USB 2.0 high speed
- JPEG Photo viewer
- Built in microphone
- Digital voice recorder
- Power save mode, auto off set
- Various EQ, repeat modes
- Supports multi-languages
- Supports Win98 SE/ME, Win2000/XP and Vista

Instructions

Connecting to a PC

Before connecting your media player to your PC, please ensure the power is set to ON. This ensures the player charges when connected.

Connect the media player to a PC by using the USB cable supplied. A small icon  will appear on the lower right toolbar which means that your media player is now connected and ready for use. Open “my computer” and you should see the ‘Removable Disk’ providing that the ‘Online mode’ of the media player is set to USB.

ON/OFF Power Supply Operation

Move the power switch to the “ON” position.

Press and hold the round centre button for 3 seconds. The display screen will come on. Repeat the same to turn the unit OFF.

Charging

This player has a built in rechargeable lithium battery. It is recommended that you charge the player for at least 4 hours with the power switch in the **ON** position before first use.

Connect the USB cable (included) to the player and then to the PC the player should now start to take a charge.





If the player feels as if it is overheating, please switch off the player and contact the technical support line detailed at the bottom of this page.

AMV Converter

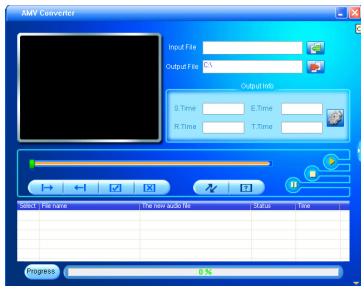
Before saving any movies onto your Media player make sure that the movies are in the correct AMV format. If they are not then please use the AMV converter software provided on the software CD to convert them into the correct format. This software will also give you the option to select the Media player as the designated output drive, which will automatically copy the movie to your player. Please follow the instructions below to do this: -

- 1 – Place the software CD disk into your PC.
- 2 – Open the AMV CONVERTOR TOOL AND DRIVE
- 3 – Open MP4 player manager
- 4 – Open MP4 player utilities
- 5 – Open AMV convertor and then open AMVTransform

Click the  button to search for the movie you wish to convert into AMV.

Click the  button to select the directory in which you want the converted file to be placed once completed (You can select the Media player removable device from here which will then place the file onto your player). If you choose an alternate folder then simply copy and paste the file onto your Media player using 'My Computer'.

Once you have selected the correct file and folder simply press the button to start the conversion.



Please note, movies will only play in the correct format.

If you already have movies stored on your PC in AMV format then simply copy and paste them to the Media player.

Once the movies are copied to your player, go to the main menu and using the left & right arrows navigate to the movie option. Press the Menu button to access the movies. This will now display the movies stored on your player. If you have more than one movie on the player then use the arrows buttons again to select the desired movie.

Press the play button to start the movie.

If you want to copy a DVD movie onto the player, you will first need to convert the DVD into a format that AMV converter will recognise. Please search for 'freeware' on the internet to do this.

Video Settings

When the video is paused you can enter further settings for the video playback. Simply press the Menu button to bring up the following options: -

- Local Folder (Enter this option to view all available files of this type)
- Delete File (Will delete the current file)
- Delete All (Will delete all files in the selected folder)
- Repeat (Allows you to set the following repeat options – normal, repeat one, folder, repeat folder, Repeat all, random, intro)

Copying pictures onto your player

The easiest way to copy pictures onto your media player is through Windows Explorer / My Computer by 'drag and drop' or 'copy and paste'. Please ensure the pictures are in the correct format JPEG, GIF or BMP.

Photo Viewing

In order to view the pictures stored on your media player simply navigate through the menu to the 'photo' option on the player and use the arrow buttons to select your desired picture and press the play button to view the picture.

Photo Settings

Simply press the Menu button to bring up the following options.

- Local Folder (Enter this option to view all available files of this type)

- Delete File (Will delete the current file)
- Delete All (Will delete all files in the selected folder)
- Play set (Allows you to set up a timed interval between each photo choose automatic and select how long you want the gaps between each picture to be, then press the play button.

Putting music onto your player

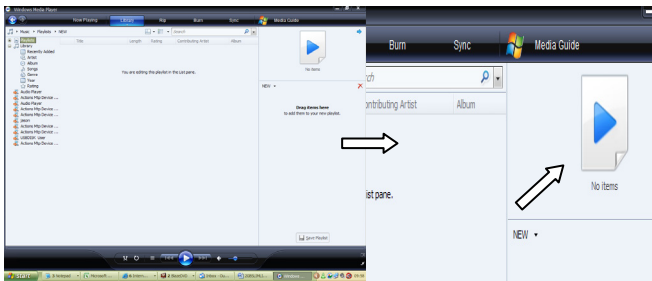
There are two ways to put music onto your player. Drag and drop or copy and paste. Please ensure the 'Online Device' mode on your media player is set to USB. In order to do this simply connect the player to your PC then go into MY COMPUTER. You will see a removable disk icon. Simply drag and drop or copy and paste your music files from your PC to the removable disk. This method however will not place your songs into ALBUMS. If you wish to do this you need to place your music on the player using the sync function.

SYNCING Music to your player

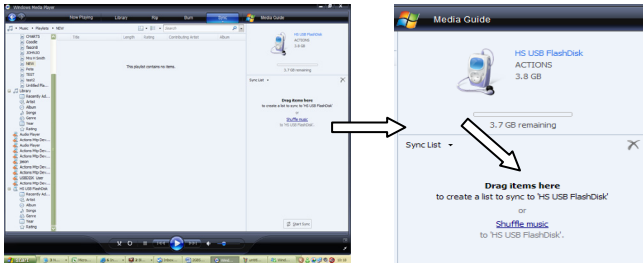
Syncing a playlist to the player will place your albums as separate folders so that you can access one album at a time. In order to do this first make sure that your player is set in the normal mode by going into the Setup Menu and selecting 'Online Mode' then press Menu to access. Now move to 'Normal Drive' and press Menu button to select. Now plug your player in and open Windows Media player.

1 – Make sure that you are running windows 11 or above. If not, then please download the latest version from the Microsoft website.

2 – Open Windows media player and connect the media player to your PC, then click on the SYNC button on the top right of the window.



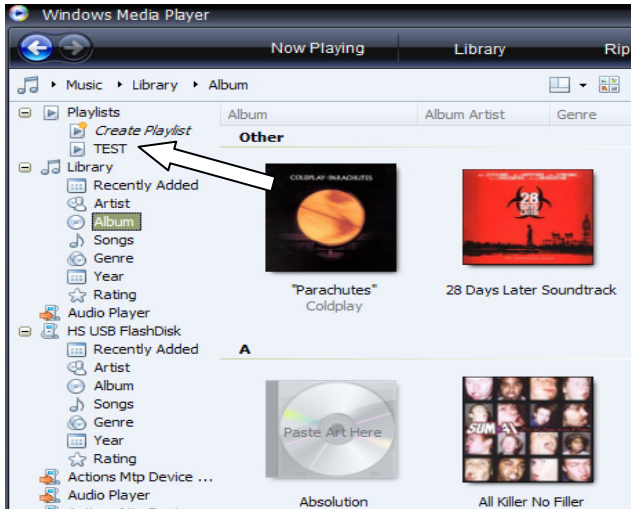
3 – You will notice on the right hand side of the screen it is asking you to drag items here to create a list to sync. Before you drag anything over you must first create a playlist containing the albums you require to put on.



4 – To create a playlist single left click on create playlist on the top right of the screen. This can be renamed accordingly.



5 – Now that you have renamed your playlist you can start dragging your albums across to this playlist.



6 – Once you have dragged all of your desired albums into the playlist you will see these in your newly created playlist.

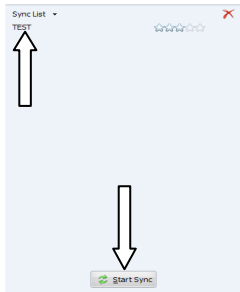
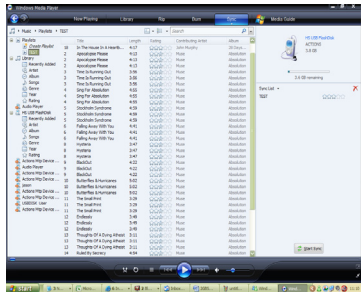
The screenshot shows the Windows Media Player interface. The main window displays a playlist named 'TEST' with the following tracks:

#	Title	Length	Rating	Contributing Artist	Album
5	Yellow	4:30	☆☆☆☆☆	Coldplay	'Parach...
18	In The House In A Heartbeat...	4:17	☆☆☆☆☆	John Murphy	28 Days...
18	In The House In A Heartbeat...	4:17	☆☆☆☆☆	John Murphy	28 Days...
2	Apocalypse Please	4:13	☆☆☆☆☆	Muse	Absolution
2	Apocalypse Please	4:13	☆☆☆☆☆	Muse	Absolution
3	Time Is Running Out	3:56	☆☆☆☆☆	Muse	Absolution
3	Time Is Running Out	3:56	☆☆☆☆☆	Muse	Absolution
4	Sing For Absolution	4:55	☆☆☆☆☆	Muse	Absolution
4	Sing For Absolution	4:55	☆☆☆☆☆	Muse	Absolution
4	Sing For Absolution	4:55	☆☆☆☆☆	Muse	Absolution
5	Stockholm Syndrome	4:59	☆☆☆☆☆	Muse	Absolution
5	Stockholm Syndrome	4:59	☆☆☆☆☆	Muse	Absolution
5	Stockholm Syndrome	4:59	☆☆☆☆☆	Muse	Absolution
6	Falling Away With You	4:41	☆☆☆☆☆	Muse	Absolution
6	Falling Away With You	4:41	☆☆☆☆☆	Muse	Absolution
6	Falling Away With You	4:41	☆☆☆☆☆	Muse	Absolution
8	Hysteria	3:47	☆☆☆☆☆	Muse	Absolution
8	Hysteria	3:47	☆☆☆☆☆	Muse	Absolution
8	Hysteria	3:47	☆☆☆☆☆	Muse	Absolution
9	BlackOut	4:22	☆☆☆☆☆	Muse	Absolution
9	BlackOut	4:22	☆☆☆☆☆	Muse	Absolution
9	BlackOut	4:22	☆☆☆☆☆	Muse	Absolution
9	BlackOut	4:22	☆☆☆☆☆	Muse	Absolution
10	Butterflies & Hurricanes	5:02	☆☆☆☆☆	Muse	Absolution
10	Butterflies & Hurricanes	5:02	☆☆☆☆☆	Muse	Absolution
10	Butterflies & Hurricanes	5:02	☆☆☆☆☆	Muse	Absolution
10	Butterflies & Hurricanes	5:02	☆☆☆☆☆	Muse	Absolution
11	The Small Print	3:29	☆☆☆☆☆	Muse	Absolution
11	The Small Print	3:29	☆☆☆☆☆	Muse	Absolution
11	The Small Print	3:29	☆☆☆☆☆	Muse	Absolution
11	The Small Print	3:29	☆☆☆☆☆	Muse	Absolution
12	Endlessly	3:49	☆☆☆☆☆	Muse	Absolution
12	Endlessly	3:49	☆☆☆☆☆	Muse	Absolution
12	Endlessly	3:49	☆☆☆☆☆	Muse	Absolution
12	Endlessly	3:49	☆☆☆☆☆	Muse	Absolution
13	Thoughts Of A Dying Atheist	3:11	☆☆☆☆☆	Muse	Absolution
13	Thoughts Of A Dying Atheist	3:11	☆☆☆☆☆	Muse	Absolution
13	Thoughts Of A Dying Atheist	3:11	☆☆☆☆☆	Muse	Absolution

The right sidebar shows a sync list for a 'HS USB Flash-Disk' with 3.7 GB remaining and a 'Start Sync' button. The sync list contains the following text:

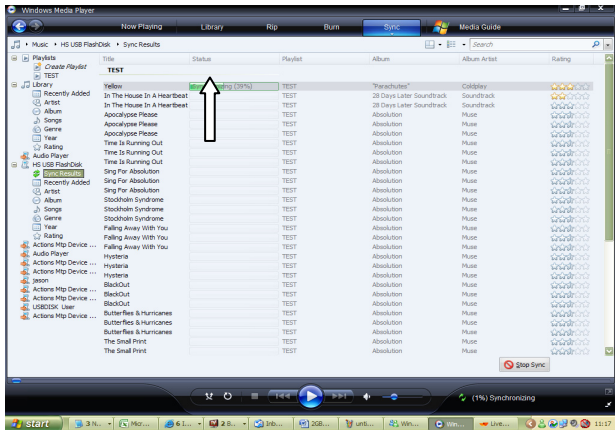
HS USB Flash-Disk
ACTIONS
3.8 GB
3.7 GB remaining
Sync List
Drag items here
to create a list to sync to 'HS USB Flash-Disk'
or
[Shuffle music](#)
to 'HS USB Flash-Disk'.
Start Sync

7 – Now drag your playlist over to the box mentioned in step 3 which asks you to drag items in to sync. What you should now see is your playlist listed in this box, then below you will see a START SYNC button you will need to press to begin syncing the playlist to the player.



8 - Windows media player should now show that it is syncing each song in your playlist by indicating a progress bar for each song.

Wait until the sync is complete before removing your player.



9 – If you get an error message when trying to SYNC, then please try the following steps and then repeat the syncing process.

1 - Go to My Computer and double left click on the ActionsMTP device which is your Media player.

2 - Right click on the Removable storage once.

3 - Left click on format and select continue when prompted.

4 - Your player has now been reformatted and you can now resync.

10 – You have now successfully synced a playlist to your player. To access each album simply switch on your player and go into the music function. From here press the Menu button and you will see a folder which says music. Move to this folder and press the Menu button again which will now display your albums. Move to the desired album and press the Menu button to start listening to the songs.

Radio Function

This player has a built in FM radio function.

NB: The earphones MUST be connected to the player in order to pick up radio stations as they act as an antenna.

Select FM Radio from the Menu options which will then display the following.



To manually scan through the FM stations continuously press either the left or right arrow buttons. To scan automatically, press and hold either of the left or right buttons. Or press the Menu button and move to auto search and press Menu again.

Once you have found the desired frequency, you can save it for future quick access. To do this press the Menu button and with the save option highlighted, press Menu again. You can save up to six stations. To recall the stations, press the middle round play button.

To delete a saved station move to your saved position, press the Menu button, scroll down to highlight delete and press Menu again.

Recording a station

As well as being able to listen to the radio, there is also a record function. Press the Menu button while listening to the radio station and scroll down to record. With record highlighted, press the Menu button to select and you should then see the following screen.



To record the station, press the play button to start recording. To pause recording press the play button again. To stop and save the recording press and hold the Menu button for 4 seconds.

In order to playback the recording, you need to exit the radio function and go back to the main menu. Navigate to the voice function and press Menu to enter, where you will find your recorded files, press play to listen.

Setup setting

Choose Setup in the main menu.

Press **▶▶** / **◀◀** to select the setting option and then press the Menu button to confirm. Pressing and holding the Menu button will take you back to the main menu.

System time

Press the “PLAY” key, the year is selected, press **▶▶** / **◀◀** key to modify the year. Press PLAY again, then the Month will be selected, press **▶▶** / **◀◀** to modify the month, and then date, hour, minute and seconds follow the same steps. Then press the Menu key to confirm the setting and exit from the system time menu.

LCD set

In sys setup you can change the amount of time taken for the screen to go off. This prolongs battery use. If you want the screen to remain on, then change the dark mode to 0 by pressing the left button.

Language setting

Users can choose the language in this mode.

In the language interface, press **▶▶** / **◀◀** to choose the desired language and press the Menu key to confirm the selection and exit from the language setting at the same time.

Power off setting

There are two options in this setting: Off time and Sleep time.

Off time: means if there is no operation during the pre-set time, the system will power off automatically. Units are in minutes and you can choose between 0 and 60 mins. If you set it to 0 this setting will not be activated.

Sleep time: means that after working for xxx minutes (xxx=preset time), the system will power off automatically. Units are in minutes and can be chosen between 0 and 120 mins. If you set it to 0 this setting will not be activated.

Note: Sleep mode is only valid once it is been set. The system will delete the setting automatically after it works. If you need this function, please reset once more.

Online mode

Users can check the amount of free memory space. Multi driver: you can see the Normal section and Encrypted section in My Computer.

Normal only: only the Normal section is shown in My Computer.

Encrypted only: only the Encrypted section shown in My Computer.

Note: Some operating systems (Pre windows 2000 SP4) cannot support two drive letters for a USB disk. This means if “ Private Space” function is on you should select “single ordinary disk” or “single encrypted disk” in order for correct displaying of the selected disk after it is connected to the PC. Please select “single ordinary disk” if you are not sure or turn off the “Private Space” .

Memory info

Users can check the memory information here.

Firmware version

Users can check the firmware of the player here.

Firmware upgrade

Under this mode, users can upgrade the Media player if new software is available. Please contact the manufacturer to check.

E-book Mode

This function supports TXT files.

1. Enter the main menu, press **▶▶** / **◀◀** button to choose “E-Book”
2. Press the Menu button to enter.
3. Press **▶▶** / **◀◀** button to select desired text file to read. Press Play button to enter text interface.
4. Press **▶▶** / **◀◀** button to turn the pages in sequence.
5. While reading, press the Menu key to enter the Bookmark setting.

Play set

1. In the E-book list, press the Menu key to enter the submenu.
2. Press **▶▶** / **◀◀** button to choose “play set” option:
3. Press the Menu key to enter this option, or press PLAY to exit.
4. Press (button to choose “Manual play” or “auto play” options. Press Menu key to confirm.
5. Press **▶▶/◀◀** button to adjust “auto play” speed. Press MENU button to confirm.

Delete File

1. In the E-book list, press the Menu key to enter submenu.
2. Press **▶▶** / **◀◀** to choose “Delete file” option:
3. Press Menu key to enter this option.
4. Press **▶▶** / **◀◀** to choose the file you want to delete and press the Menu key to confirm.
5. Press **▶▶** / **◀◀** to choose Yes or No, and press the Menu key to confirm.

Delete All

1. In the E-book list, press the Menu key to enter submenu.
2. Press **▶▶** / **◀◀** to choose “Delete all” option:
3. Press the Menu key to enter this option.
4. Press **▶▶** / **◀◀** to choose Yes or No, if yes is selected all the E-book files will be deleted.

Game Mode

Press the Menu key to navigate to Game mode, and Menu again to enter. Then press **▶▶** / **◀◀** to select the desired game and press the Menu key to confirm.

FAQ

1. When I press “play”, No display?

Cause/ Solution: Ensure the battery is charged.

2. When I want to play files, there is no sound?

Cause/ Solution: Ensure the volume is turned up. Check the earphones are connected properly.

3. Why does my computer display an error when I disconnect the player?

Cause/ Solution: When transferring files from your PC to the media player, DO NOT disconnect before transfer has completed.

4. Why can't I download files while the media player is connected to the PC?

Cause/ Solution: If using win98 or below it may well be the USB Driver hasn't been installed correctly, Please install the USB driver again and follow the operation instruction, or your computer's motherboard may not support the USB equipment, you may need to update your motherboard driver.

5. Why can't I see the files which have been stored in the player?

The file type may be wrong? Check that the song type is either MP3, WAV or WMA. For videos it must be in AMV and for photos it must be in JPEG.

6. Why does it display 'the disk is full' in the computer but we do not see any files in the disk after connecting the PC?

Cause/Solution: In the setting mode, you set the Online device mode as Media device now but the online device mode was USB mode when you downloaded the files or you set the Online device as USB the online device mode was Media device when downloading the files. Please set the online device into the appropriate mode.



8GB PORTABLE VIDEO PLAYER

FAULT REPORT CARD

Name _____

Address _____

Email _____ Daytime Tel No _____

Model Number 42263 _____

Fault Description _____

SERVICE HELPLINE

UK/N.IRELAND 0844 635 0008

REP IRELAND 1800 995 036

WEB: WWW.QESH.CO.UK

QESH LTD.

1 SOLWAY COURT. CW16LD



8GB PORTABLE VIDEO PLAYER

WARRANTY CARD

Congratulations! You have made an excellent choice with the purchase of this quality product. Our commitment to quality also includes our service. Should you, contrary to expectations, experience defects due to manufacturing faults during private use within 36 months of the date of purchase we shall be liable for warranty in accordance with statutory warranty regulations provided that:

- the device was not put to any use other than the intended
- was not overloaded
- was not used with the wrong accessories
- repairs were not carried out by any other than the authorized workshop

The warranty certificate is only valid in connection with the receipt. Please keep both in a safe place. This warranty does not affect your statutory rights.

This purchase is guaranteed for a period of three years beginning on the day of purchase. Keep your purchase receipt safe as proof of date of purchase. The guarantee can only be extended for the duration of any repair required.

Should your item become defective during the warranty period, in the first instance please call our service centre on the number below, they will then inform you of what to do next. We will at our discretion, either repair or exchange the device in accordance with warranty legislation.

Please enclose the following when sending your product in for repair:

1. Receipt (proof of purchase)
2. This warranty certificate with the fault report form overleaf complete with your name, contact details and fault description.

If the original receipt is not enclosed the repair will be charged in all cases. After the warranty has expired you can still send defective devices for repairs to the address stated below. Quotes as well as repairs after the warranty period are to be paid for in all cases.

Ensure that the product is sent well packed as no responsibility can be accepted for items lost or damaged in transit.

This warranty does not affect your statutory rights.

